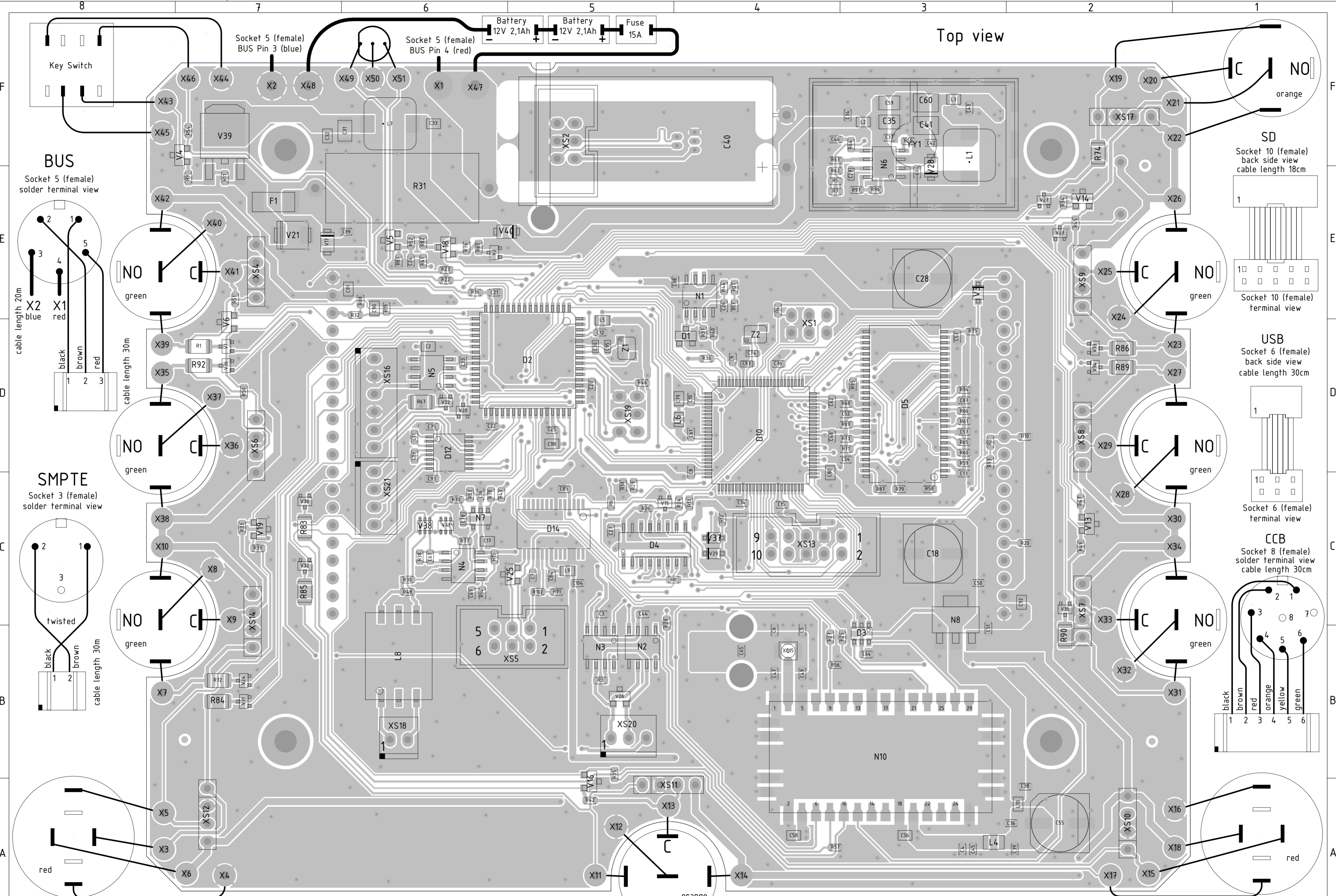
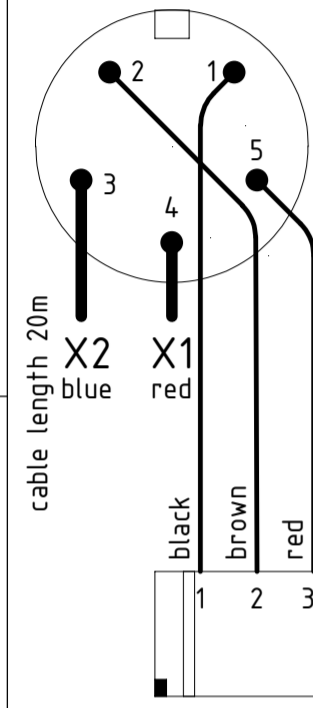


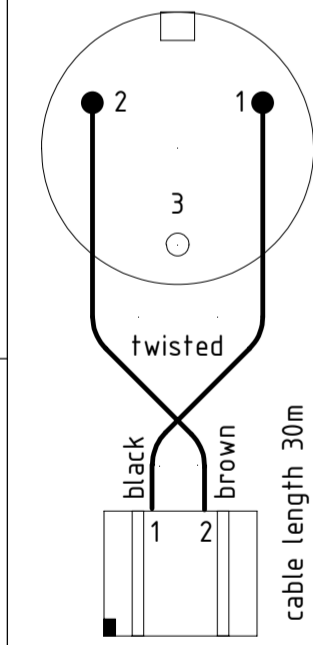
Top view



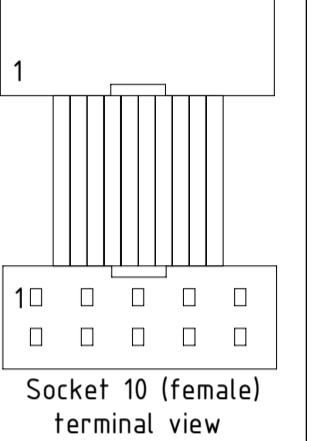
BUS
Socket 5 (female)
solder terminal view



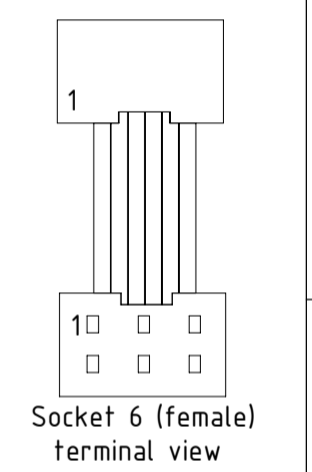
SMPTE
Socket 3 (female)
solder terminal view



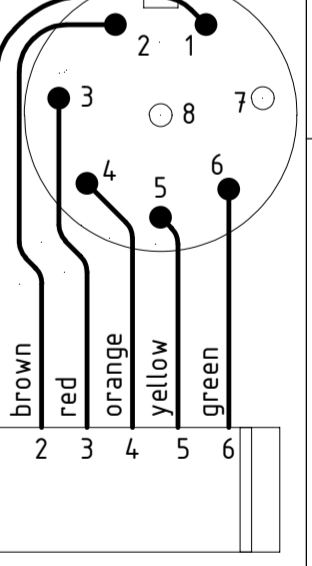
SD
Socket 10 (female)
back side view
cable length 18cm



USB
Socket 6 (female)
back side view
cable length 30cm



CCB
Socket 8 (female)
solder terminal view
cable length 30cm



drawn	11.12.18	Boehm	drawing number	index	chg.no.	sheet
check.				COMM	6	1 of 2 sh.
mod.						
EDV no.: \$(PCB_ROOT)\$(PCB_EXT)			Date: \$(GDATE_DT2)			