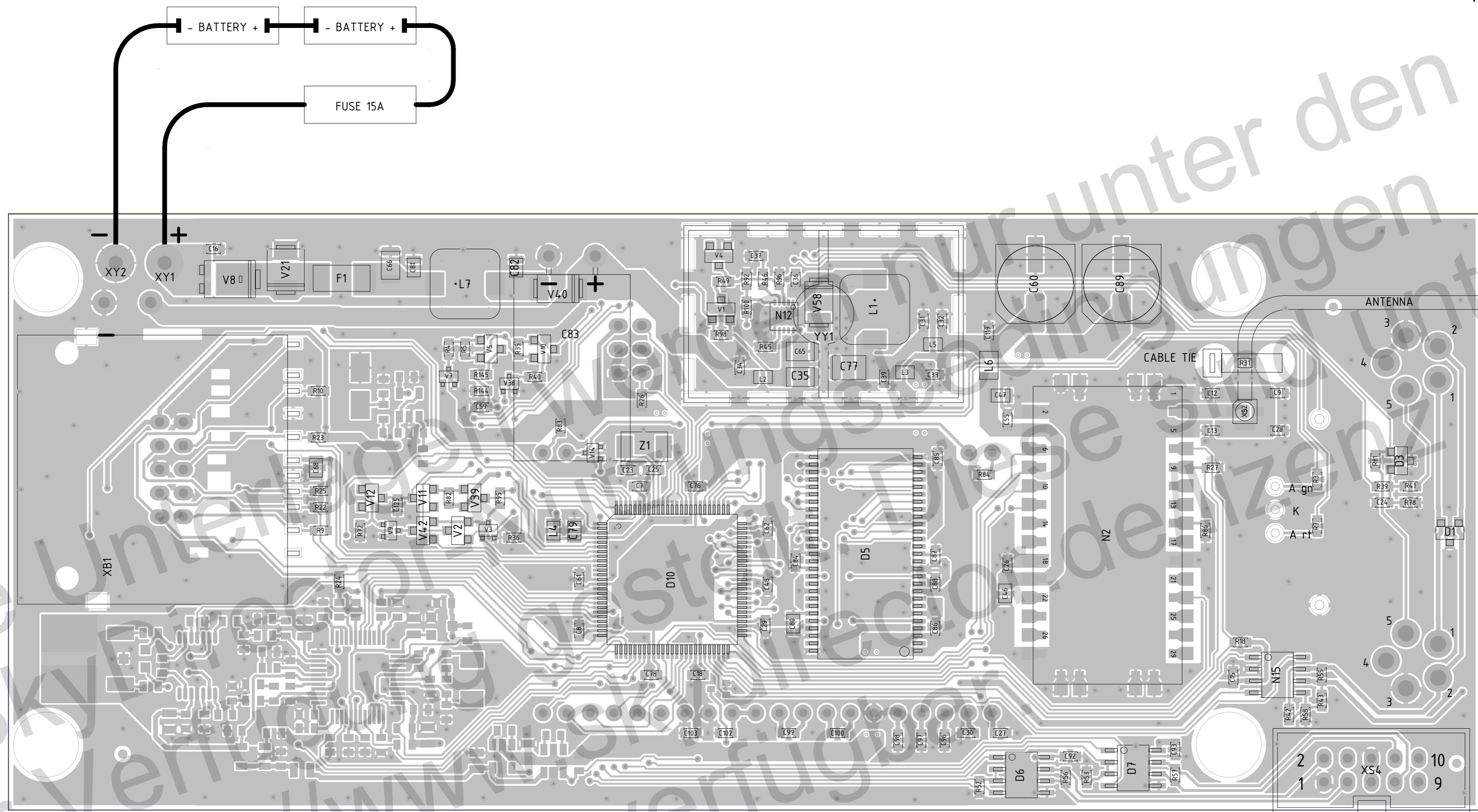


Top view



FEMALE
 BUS OUT
 Pin 1 - CAN L
 Pin 2 - CAN H
 Pin 3 - GND
 Pin 4 - 24V
 Pin 5 - MOD OUT

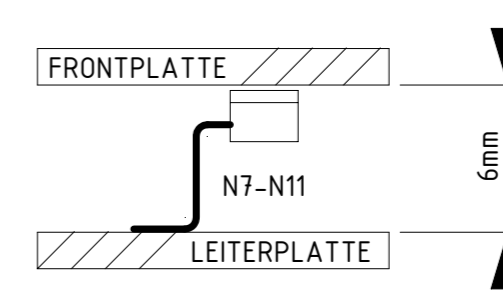
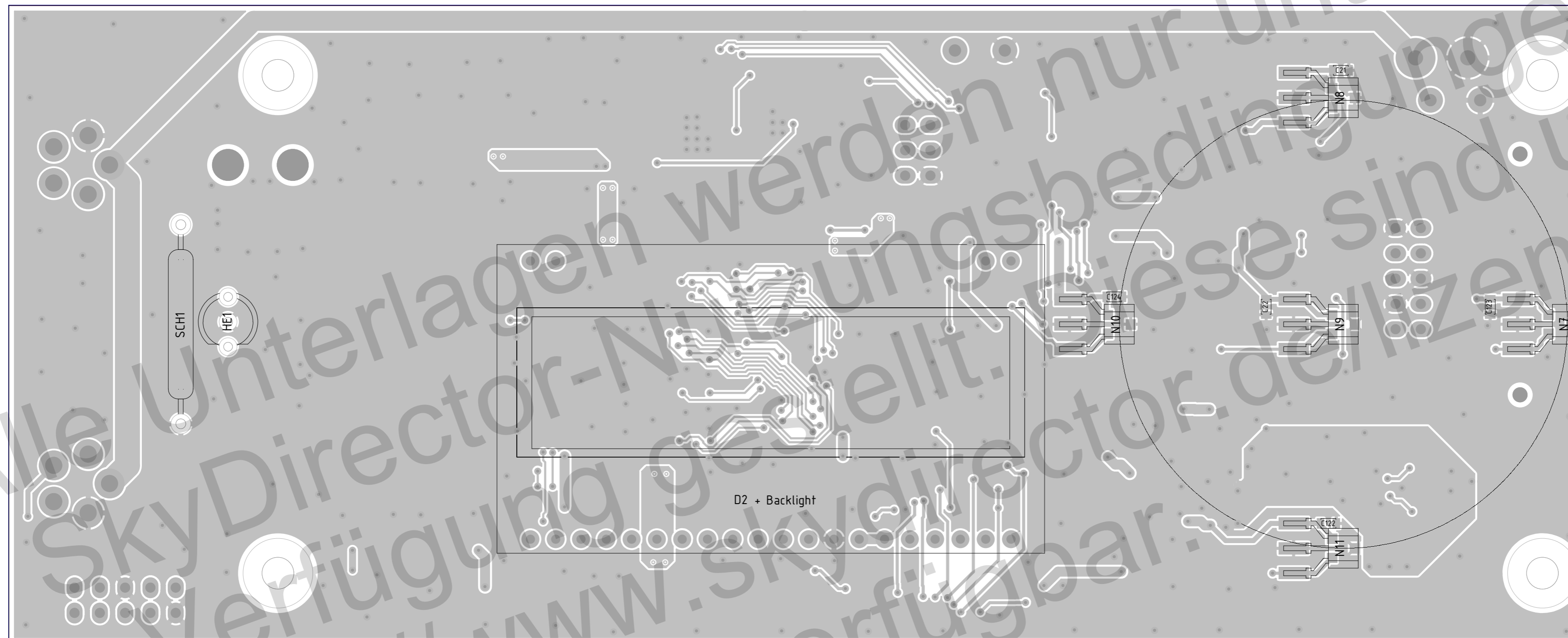
MALE
 BUS IN
 Pin 1 - CAN L
 Pin 2 - CAN H
 Pin 3 - GND
 Pin 4 - 24V
 Pin 5 - MOD IN

DMX 1
 Pin 1 - GND
 Pin 2 - DMX-
 Pin 3 - DMX+
 Pin 4 - DATA- (nc)
 Pin 5 - DATA+ (nc)

DMX 2
 Pin 6 - GND
 Pin 7 - DMX-
 Pin 8 - DMX+
 Pin 9 - DATA- (nc)
 Pin 10- DATA+ (nc)

			scale: 3:1			
drawn	date	name	loaded printed circuit board DMX Modul 5			
check.	05.03.15	Böhm				
sign.						
mod.						
SkyDirector			drawing number	index	chg.no.	sheet
All right reserved see DIN 34 / ISO 16016			DMX Mod 5			1 of 2 sh.
EDV no.: Audio_DMX_PH2_5.pcb			Date: 01.06.2015 10:29			

Bottom view



			scale: 3:1			
drawn	date	name	loaded printed circuit board DMX Modul 5			
check.	Böhm	05.03.15				
sign.						
mod.						
SkyDirector			drawing number	index	chg.no.	sheet
All right reserved see DIN 34 / ISO 16016			DMX Mod 5			2 of 2 sh.
EDV no.: Audio_DMX_PH2_5.pcb			Date: 01.06.2015 10:29			